

HOMES & GARDENS[®]

APRIL 2014
£3.99

HOMES WITH PERSONALITY AND *Design magic*

EASY UPDATES

CHIC PENDANT LIGHTS

GRAPHIC RUGS

SMART INDOOR PLANTING

SIMPLE PLEASURES

GARDENS TO DELIGHT

LOOKS FOR EASTER DINING

FRESH SPRING RECIPES

A TOUCH OF PATTERN
THIS SEASON'S FABRICS
AND WALLPAPERS

RECALL: 2/4/13



TIME TO REFLECT

*Clever lighting and design
have created an exceptional
space in which to display
the treasures that Eric and
Laura de Winter have
amassed over the years*

WORDS SERENA FOKSCHANER
PHOTOGRAPHS JAMES BALSTON

SITTING ROOM

*Flooded with light from
a double-height glass
extension, this calming
space offers an alluring
view of the garden beyond. ▶*



SITTING ROOM

Paintings have been enhanced with inventive frames, which chime with the sleek feel of the interior.

Giraffe lamp and African Fez shade. £952, Porta Romana, 01420 23005, portaromana.co.uk. **Canal Grande vase.** £2,388, Promemoria, 020 7730 2514, promemoria.com.

SITTING ROOM

Low-lying storage and floating shelves link the formal and relaxed areas of this generous space (also above), where artworks are illuminated by bespoke lighting.

Round Cheval mirror. £995, Louise Bradley, 020 7589 1442, louisebradley.co.uk. **Anemone lamp** (on console), from £1,442, Best & Lloyd, 020 7610 9191, bestandlloyd.com.



LANDING

Here, a bespoke metal balustrade offers balance to the bold storage and allows light to stream in to the staircase (below).

Alba armoire, from £3,250, Pinch, 020 7622 5075, pinchdesign.com.

Bench in Passiflora T50, £228th, Missoni Home at Amara, 0800 587 7654, amara.com.



Laura de Winter flicks a switch and, instantly, gentle washes of light draw you towards objects rare and curious dotted around her sitting room. A collection of gilded Persian glass is flanked by the sculpture of a shapely Hindu goddess. Ornate, tribal jewellery gleams from a Perspex box. Nearby, a trio of graceful sculpted figures perches above the staircase where sunlight ripples across white walls subtly textured to resemble shifting sand.

In Laura's previous house, a practical family home dominated by four sons, all these treasures were hidden from view. Antique paperweights and ancestral knick-knacks lurked in corners, and vibrant paintings hung in dark corridors, says Laura, "because we were too busy to think about displaying things properly".

Two years ago, however, an unexpected encounter with an estate agent changed all that. "The last of our children had moved out and we'd been thinking of selling our house," Laura recalls. "Then, out of the blue, one of my sons rang to say that he'd organised some viewings." Four properties later, Laura and her husband Eric had found their ideal: a slim, stucco-fronted house with garden in central London. Seizing the opportunity to downsize and start afresh, Laura commissioned interior designer Juliette Byrne to transform the "previously bleak setting into a sophisticated, urban interior".

Laura had seen Juliette's work in *Homes & Gardens* and admired her skill for putting unusual pieces together. "I



GARDEN

Mature plants were mixed with new specimens to create a timeless space for entertaining.

Garden design, Judith Sharpe, 07968 805582, judithsharpegardens.co.uk.

Deneb table, from £1,020; **Deneb benches**, from £654 each; all Stua at Encompass, 023 9241 0045, encompassco.com.



OFFICE

Tucked beneath the stairs, a neglected nook is now a functional workspace enlivened with family treasures, such as this miniature Bugatti (right).

Similar magazine files in Orange, £11 each, The Holding Company, 020 8445 2888, theholdingcompany.co.uk.



DINING ROOM

Textured walls and backlit storage faced with antique glass infuse the space with glamour.

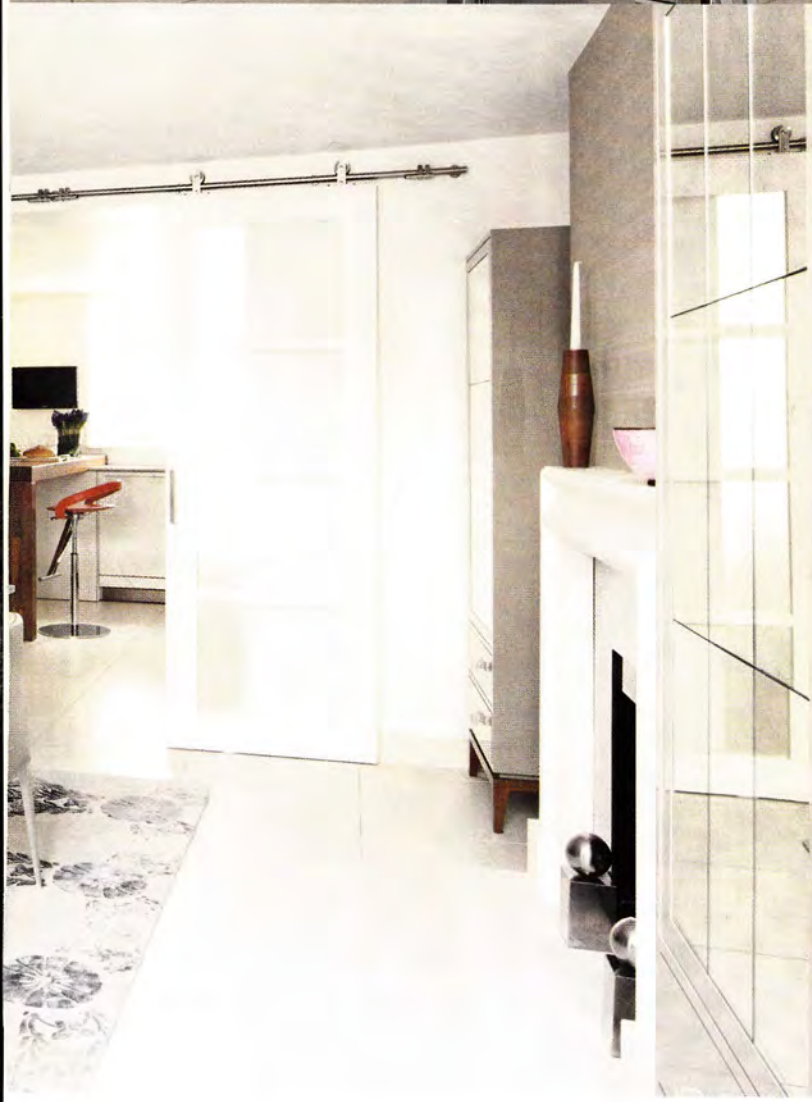
Bespoke cupboards and interior design, Juliette Byrne, 020 7352 1553, juliettebyrne.com. Silver Kaleidoscope rug, from £1,285sq m, David Rockwell at The Rug Company, 020 7229 5148, therugcompany.com.



KITCHEN

Tired wooden units were replaced with a sleek Bulthaup design, while the Hermès-orange stools echo accents of the same shade found throughout.

Fasem bar stools in Orange, £954 each, Mowlem & Co, 020 7610 6626, mowlemandco.com.



“This was a wonderful chance to design a home around pieces that have real meaning to the family”

knew that she could do something interesting with our eclectic collection. It’s these items, each with its own story, that make this a home,” says Laura.

Juliette was equally enthusiastic about the project. “This was a wonderful chance to design a home around pieces that have real meaning to the family,” she says. What also makes this house so intriguing is the way in which these cherished pieces are integrated – not stuffily displayed – into the interior. “We culled our collection so that only the best was kept,” says Laura. In the “sleek, masculine” guest room, Juliette points out an ancestral regimental saddle chest. Once consigned to the attic, it has been reinvented as a handsome bedside table. A pale leather headboard links the twin beds, while illuminated shelves, lined with family books, complete the fluent design. Opposite, a Bertioia chair, its wiry elegance once eclipsed by toys in the nursery, has been reupholstered in velvet for “a new lease of life”.

“This was the first chance I had to really focus on every aspect of doing up a house,” says Laura, indicating slim, horn handles by Ochre on leather-clad wardrobes in the bedroom. Elsewhere, even the most practical designs exude aesthetic appeal. On the landing, a bespoke metal balustrade features a charming design of bulrushes and

dragonflies, and a bench, emblazoned with a Missoni Home print, offsets paperweights in stands made by exhibition designer Dauphin. Lighting by Sally Storey of John Cullen was meticulously plotted so that “the house feels like a jewellery box at night”, says Laura.

Despite previous alterations, the house had awkward elements, as Juliette explains. “In the ground floor sitting room we removed a pillar to create two flowing spaces, one for entertaining, the other for relaxing in front of the television.” At one end, heirloom armchairs recovered in a lustrous weave and a restored David Hicks table strike a formal note in contrast with the low-slung sofa and ottoman in the family area at the other end. “Framer *par excellence*” Marcus Wells reframed the vivid Moroccan painting, which inspired the tones of the custom-made rug. Instead of conventional built-in storage, floating shelves link the two areas.

From here, there are tantalising glimpses of the garden through the double-height window and floating steps lead to the basement, where ceilings were raised to create a glamour-suffused space. Parisian-grey cupboards, faced with antique glass, reflect ancestral cutlery offset by modern ceramics. Nearby is a chubby Art Deco glass bird by Martell; another once-overlooked treasure, it now perches on a bespoke branch so that, as Laura concludes, “Like everything else, it has a home of its own.” ■



GUEST BEDROOM

A wall was reinstated on the top floor to create this space, which has been neatly finished with smart built-in cupboards.

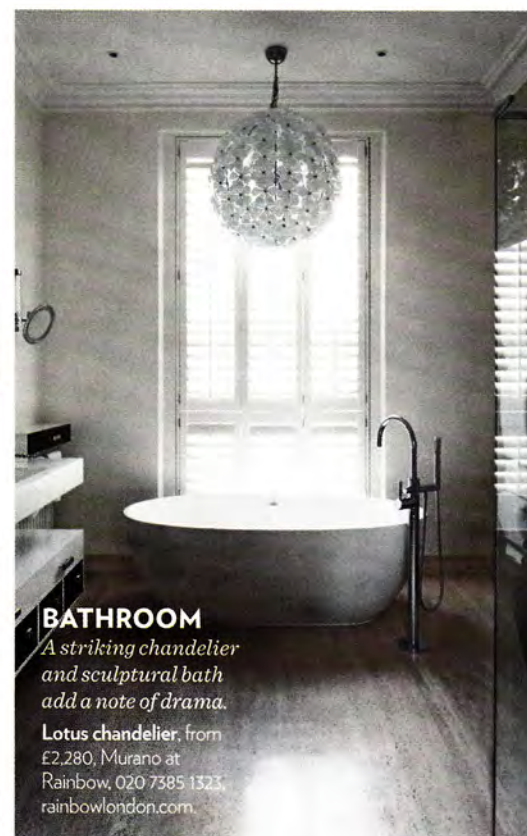
Upholstered storage bed.
 £699. Dwell, 0845 675 9090.
 dwell.co.uk



MAIN BEDROOM

Luxuriously upholstered furniture and layered bedlinen are a fitting foil to Laura's collection of reframed theatrical costume prints.

Dita bench, £927, Robert Langford, 0845 009 0203, robertlangford.co.uk. **Jade Trident lamps**, £1,195 each, 020 7589 1442, louisebradley.co.uk. **Bespoke picture frames**, De Havilland Designs, 07768 363571.



BATHROOM

A striking chandelier and sculptural bath add a note of drama.

Lotus chandelier, from £2,280, Murano at Rainbow, 020 7385 1323, rainbowlondon.com

| TO SEE SALLY STOREY'S LIGHTING DESIGN FOR THIS HOUSE, VISIT HOUSETOHOME.CO.UK/LIGHTINGATERRACEDHOME |